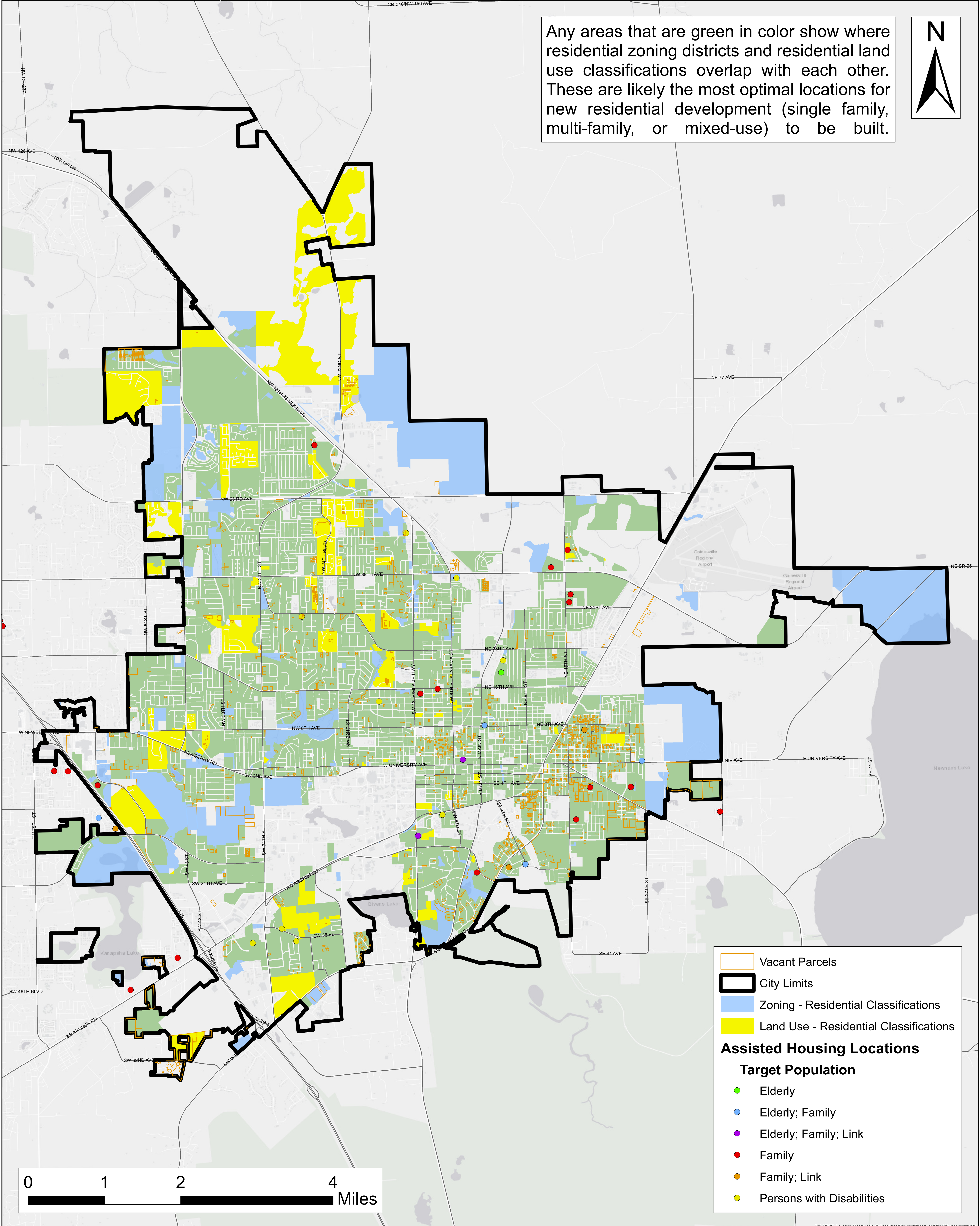
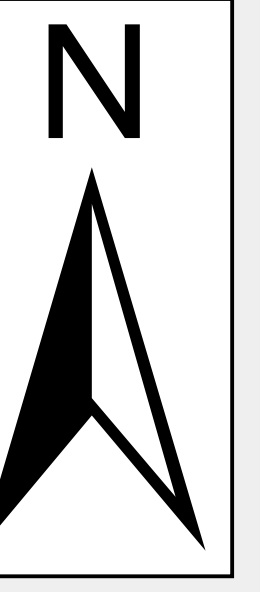


Vacant Parcels & Residential Land Use/Zoning

Any areas that are green in color show where residential zoning districts and residential land use classifications overlap with each other. These are likely the most optimal locations for new residential development (single family, multi-family, or mixed-use) to be built.



- Vacant Parcels
- City Limits
- Zoning - Residential Classifications
- Land Use - Residential Classifications

Assisted Housing Locations

Target Population

- Elderly
- Elderly; Family
- Elderly; Family; Link
- Family
- Family; Link
- Persons with Disabilities

